

Curriculum

Integrated syllabus support and customisation

Auralia includes support for many curriculum, with carefully graded drills that have been mapped to the set standards.

Custom syllabuses give teachers complete control, ensuring that their students work with the most suitable ear training drills.



Syllabus Support

Auralia has been specially designed to allow it to easily support multiple syllabuses, so that students can practise ear training topics that is absolutely relevant to the curriculum that they are using.

If you are not using any particular curriculum – don't worry – Auralia has a syllabus covering all topics that is suitable for any Ear Training student.

- ✓ Auralia 5 Complete
- ✓ AP* Music Theory
- ✓ Band
- ✓ Jazz
- ✓ Florida State MTA
- ✓ GCSE
- ✓ New Zealand
- ✓ Trinity
- ✓ VCE
- ✓ Western Australia
- ✓ Queensland
- ✓ Solfege – Fixed Do
- ✓ Solfege – Moveable Do La
- ✓ Solfege – Moveable Do
- ✓ South Australia

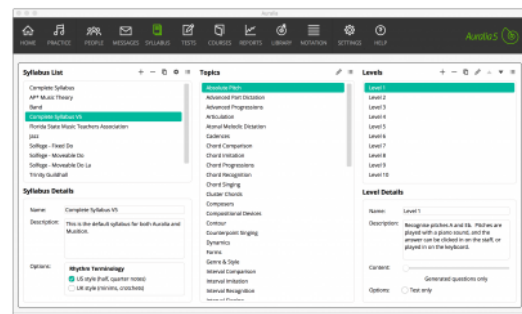
Syllabus Customisation

Auralia is completely flexible, allowing you to create your own syllabuses that match your curriculum.

Your syllabi need only have levels for relevant topics, although there is no limit to the number of levels that you can create.

Students only see topics that have levels, simplifying their practise screen and ensuring focus on the key areas.

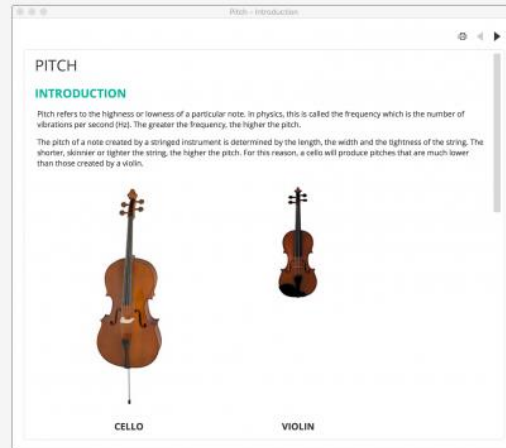
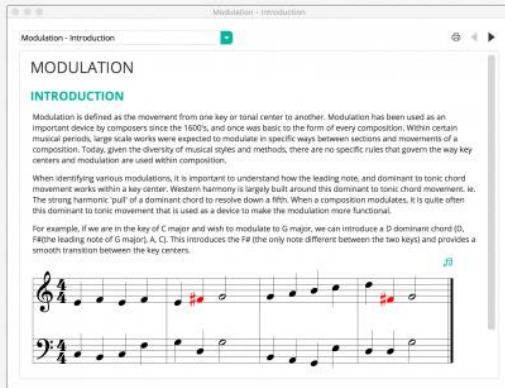
Creating a syllabus is simple, and once done, can be assigned to any of your classes. You can also use your custom syllabi in your and tests and courses that you create!



Lessons

The lessons module has an entry for each of Auralia's topics. These lessons are effectively a comprehensive digital textbook, containing text, audio recording and notation excerpts, with playback.

Topics such as Chord Recognition and Scales also feature a 'reference' page as part of their lessons, where all chords and scales contained within Auralia can be viewed and played back. These reference pages will also automatically show any customised Chords or Scales that you may have entered into Auralia.

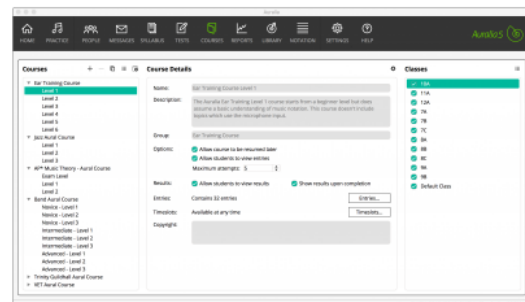


Courses

Courses allow you to integrate lessons, drills, library questions and tests, providing a structured learning sequence for your students.

Auralia has many curriculum mapped courses included and ready to go, but you can also create your own, a much requested feature! Once your custom courses are created you can assign them to your students and easily monitor their progress.

A key difference with courses is the ability to set thresholds for student progress. Using these thresholds guarantees that students achieve the required score before moving to the next step.



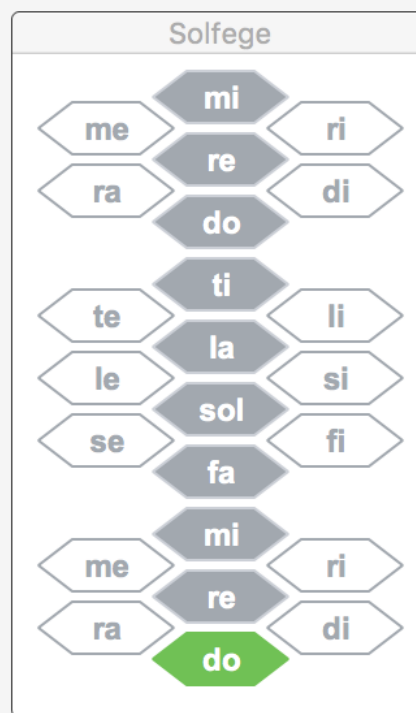
Solfege, Piano and Guitar Input

Solfege

The onscreen Solfege controller allows students to enter their answers using Solfege note names (Do, Re, Mi, Fa etc) as well as allowing for questions to be displayed on the Solfege controller.

Fixed Do and two variants of Movable Do are supported, with a customised syllabus being supplied for each of the three variations. To further integrate the Solfege controller, many topics have been extensively modified and customised and musical notation also supports the placing of Solfege note names underneath notes.

This allows students to see their correct and incorrect answers in two ways, using both traditional notation and Solfege note names.



Piano

Students who are more comfortable working with a keyboard can use the onscreen piano keyboard to easily enter their answers in many topics.



Guitar

The on-screen guitar fretboard is perfect for guitar players. Note names are highlighted as you mouse over each string and fret position.

